



THERE'S NO RESCUE WITHOUT **YOU!**



ANNUAL REPORT
2014

PROGRAMS = MISSION

Nueva Vida Haven



The only nightly drop-in, emergency shelter for women and children in San Diego County. We care for them 365 days a year.

Women and Children's Center

This 12-month residential program helps get families back on their feet, kids back in school, and hope back in their lives.



Men's Center



The 12-month residential rehabilitation program, provides the tools, training and spiritual foundation to transform their lives.

Recuperative Care Unit

RCU provides the critical care homeless men and women need when released from the hospital, but still requiring time to heal.



Transitional Housing



This is a multi phase transitional housing program designed for men and women working towards self sufficiency.

Children's Center

Homeless children up to 5 years old learn and grow in this pre-school. Education, play, healthy snacks and social interaction are part of their everyday life here.



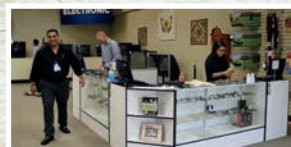
Outpatient Therapy Clinic



Our clinic provides free, quality counseling to individuals, families, children and couples who are homeless, at risk, or unable to afford therapy.

Work Therapy

Our thrift stores, warehouse and kitchen provide clients opportunities to develop and refine skills necessary to gain employment upon graduation.



Partners for Hunger Relief



We collect millions of pounds of surplus food per year to use & distribute to local non-profits providing hunger relief for those beyond our walls.

Over the past **12 months** our Rescue Mission has:

Sheltered men,
women and children for
151,840 nights



Provided **455,520 meals**,
more than 1,100 each day

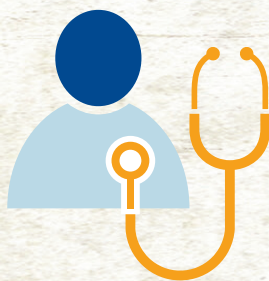


Collected **2,907,989**
pounds of food valued
at \$7.6 million, through our
food recovery program,
Partners for Hunger Relief



Cared for **691 children &**
946 women providing
safety from the streets &
meals in our emergency
overnight shelter

Rescued **169 people**
providing case management
and critical care in our
Recuperative Care Unit

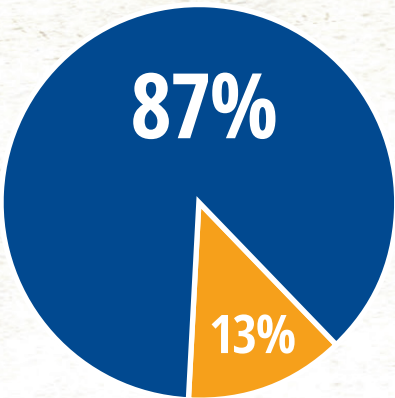


FINANCIAL SUMMARY

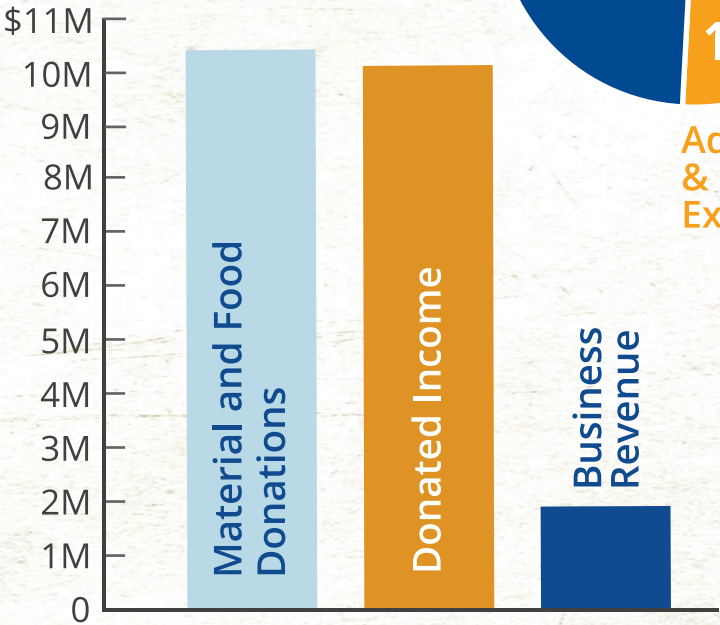
Fiscal year October 1, 2013 through September 31, 2014

Complete audited financial statements are available upon request. Tax ID #95-1874073

Program Expenses



Administrative & Fundraising Expenses



INCOME 2014

Donated Income	\$10,080,750
Business Revenue	\$1,894,139
Material and Food Donations	\$10,258,743
Total Income	\$22,233,632

EXPENSES 2014

Program Expenses	\$15,919,536
Administrative Expenses	\$833,840
Fundraising Expenses	\$1,507,543
Total Expenses	\$18,260,919

DID YOU KNOW



of our income comes from
individuals like you

The Rescue Mission accepts
no government funding
for our core programs.

We receive over
40% of our income
between October & December

Yet our needs are **365 days a year**



The San Diego Rescue
Mission touches nearly

450 lives daily



Call (619) 687-3720 to give
a gift today or visit
www.SDRescue.org.



Dear Friend,

I want to personally THANK YOU for partnering with us at the San Diego Rescue Mission throughout 2014. As a result of your generosity, we were able to add three programs to continue meeting the needs of homeless men, women and children in San Diego County.

When we first opened our doors 60 years ago, the Rescue Mission offered little more than a warm meal, temporary shelter, and the good news that God loves them. Our message is still the same, but today we provide our residents and local homeless a full range of *life-changing* services.

This is only possible with God's help and the generous donations of caring partners like you. There's no rescue without you! On behalf of our entire staff and those we serve, THANK YOU.

God bless,



Herb Johnson
President/CEO



P.O. Box 80427 San Diego, CA 92138
www.SDRescue.org (619) 687-3720